

# Famous Volcano Brochure

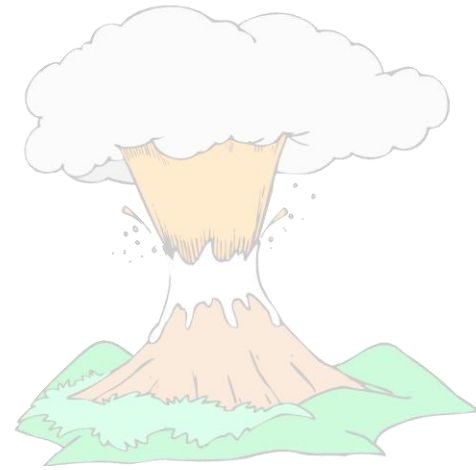
Name \_\_\_\_\_  
Period \_\_\_\_\_ Assignment # \_\_\_\_\_

## Task:

- You will choose a volcano to **research**—either one that is currently active or one that has been active in the past.
- You will produce a two-sided **brochure** publicizing your volcano.

## What are the Requirements?

These are the items that **MUST** be included on your brochure:



### ✓ CONTENT

- The location of the volcano.
- A brief description of where it gets its name
- What kind of volcano it is: strato, composite or shield and its activity level
- When the volcano has erupted in the past
- Any pre-eruption activities that were observed or would expect to be observed before an eruption of this volcano.
- A description of past volcanic eruptions or what could be expected of a future eruption.
- Materials composing the volcanic eruption—(Was it or would it be lava, tephra, magma, lahar, gases)
- How people were affected by the eruption (or how would people be affected by the eruption)?
- What kind of danger is involved in living near the volcano
- Whether it is expected to erupt again in the future

### ✓ SOURCES (AT LEAST THREE)

### ✓ GRAPHICS

- At least one picture of the volcano
- At least one map depicting the volcano's location
- Graphics supporting your content

## Tips on Making Brochures

- Break text into chunks or bullets so that it is easy for the reader to digest
- Do not overload the brochure with **graphics** OR with **text**
- Let the brochure represent a natural progression of information (introduction on the first flaps, more detailed content on the inside)